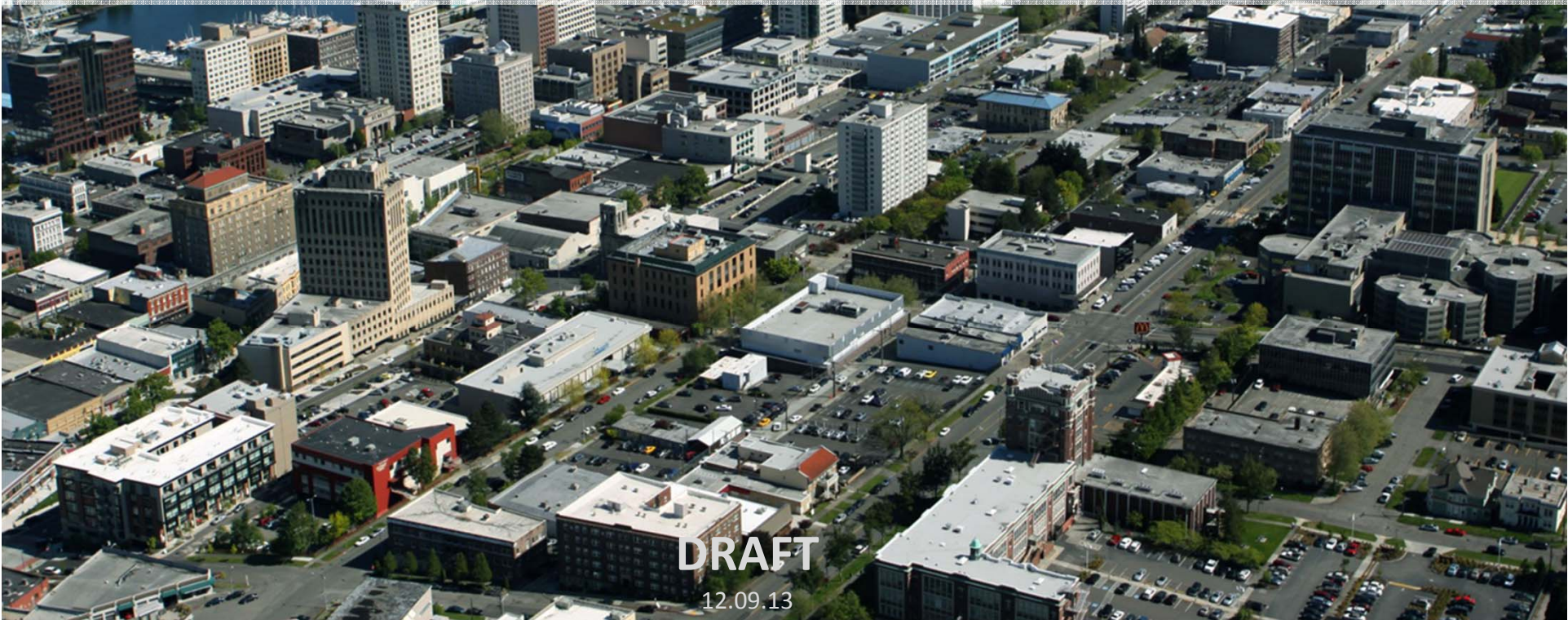




TACOMA AMTRAK STATION

AT FREIGHTHOUSE SQUARE



DRAFT
12.09.13

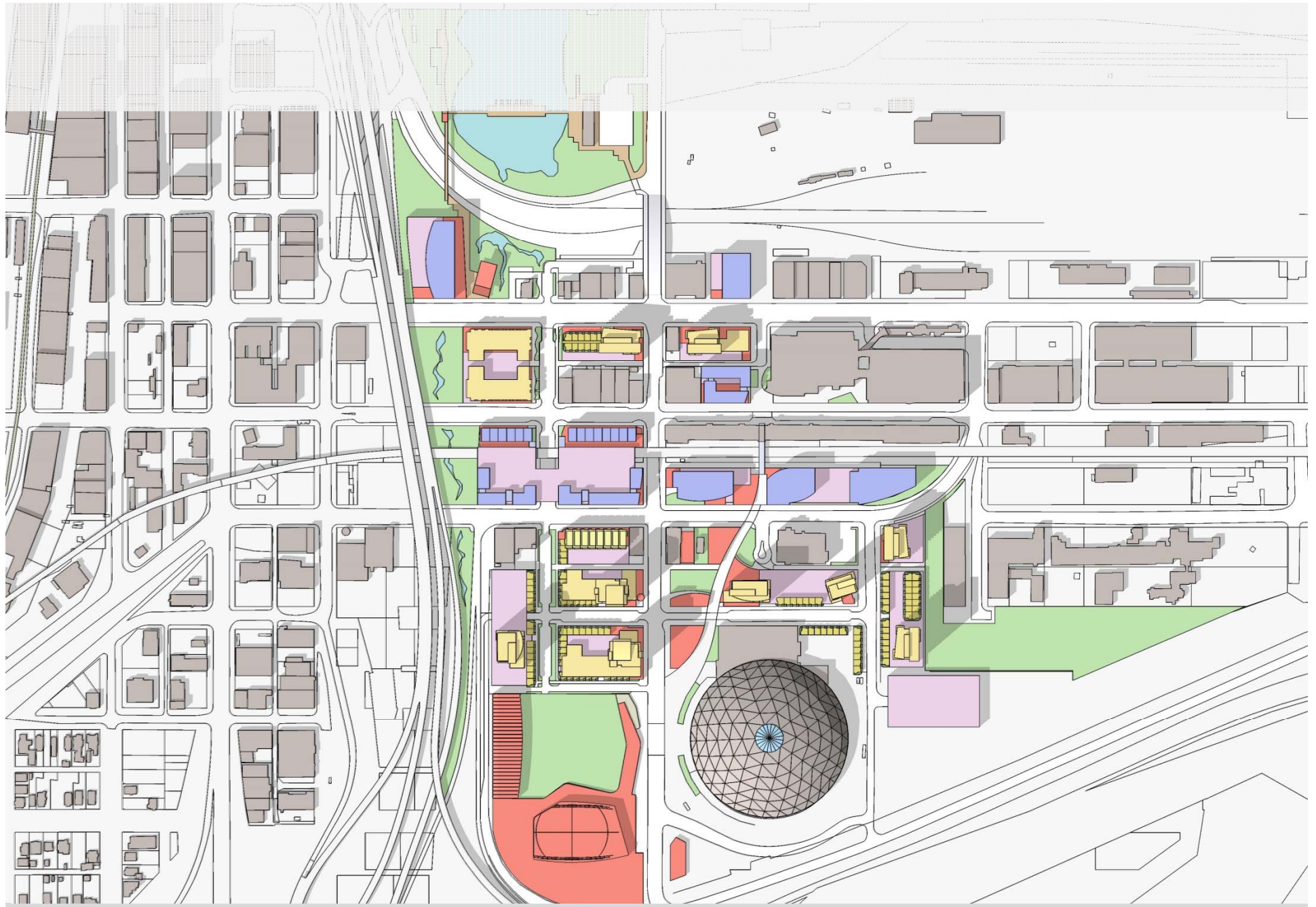
Point Defiance Bypass



DRAFT

12.09.13

VIA



Opportunity

DRAFT
12.09.13

VIA



DRAFT

12.09.13

VIA



DRAFT
12.09.13

VIA

Location | The Only Feasible Location



DRAFT

12.09.13

VIA

Location | East, Middle, and West



DRAFT

12.09.13

VIA

Constraints – East 25th Street, FHS



DRAFT
12.09.13

VIA

Constraints – East D Street, RR



DRAFT
12.09.13

VIA



DRAFT

12.09.13

VIA



Context - Old Tacoma

DRAFT

12.09.13

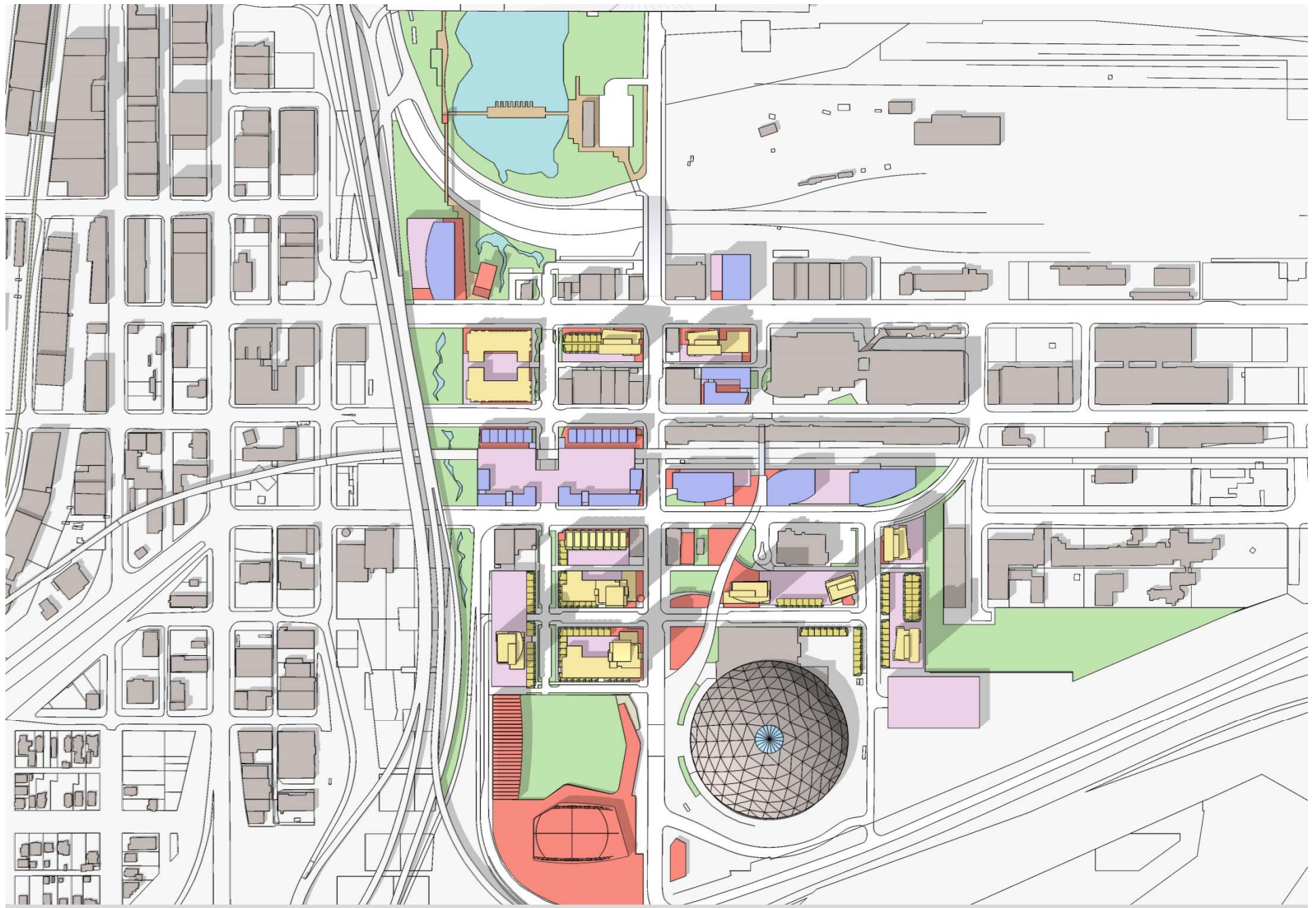
VIA



Context - New Tacoma

DRAFT
12.09.13

VIA



Design | Form Follows Function



DRAFT

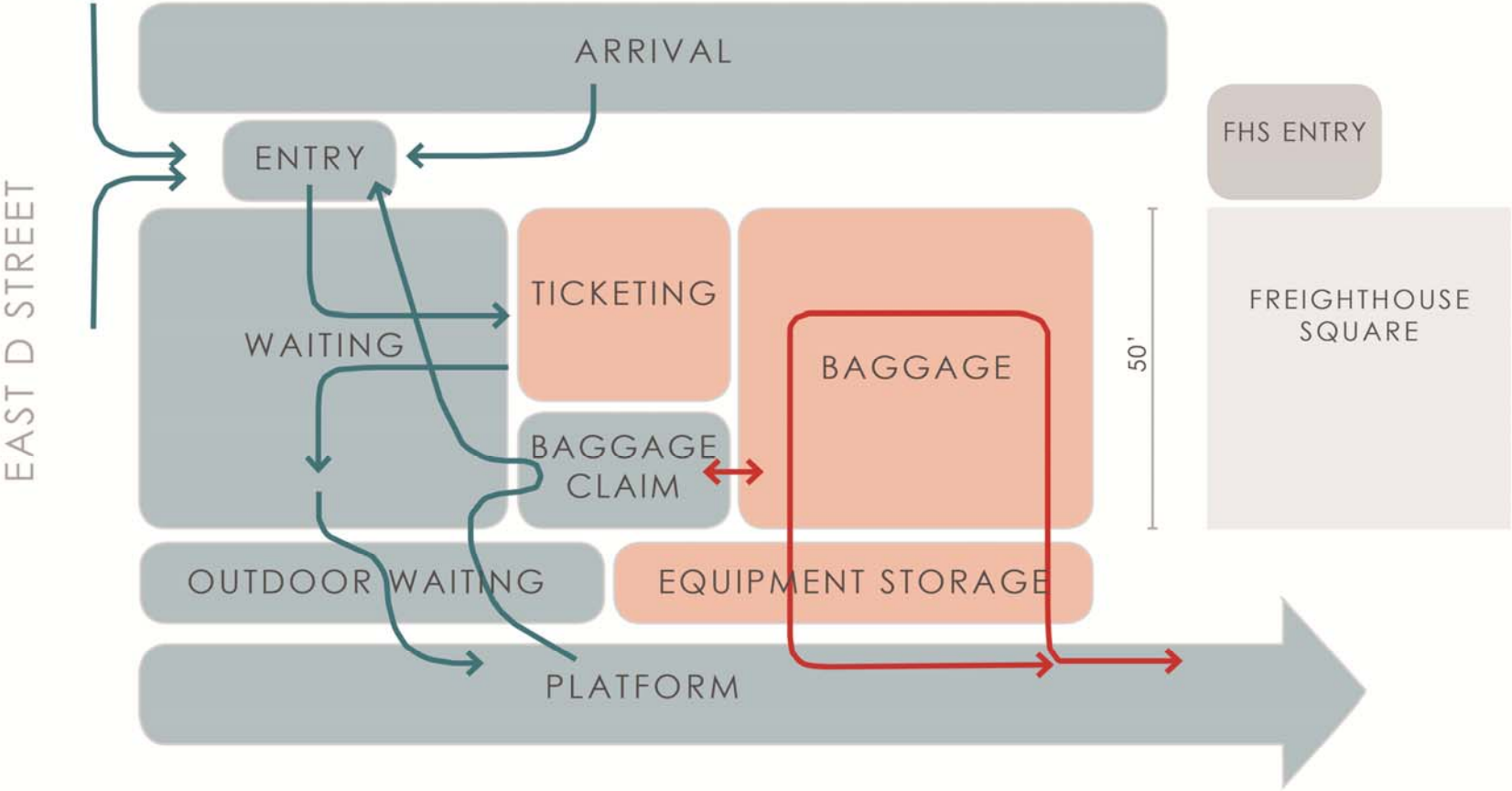
12.09.13

VIA

www.EgyptSon.com

Function | Passengers, Ticketing, Baggage

EAST 25TH STREET

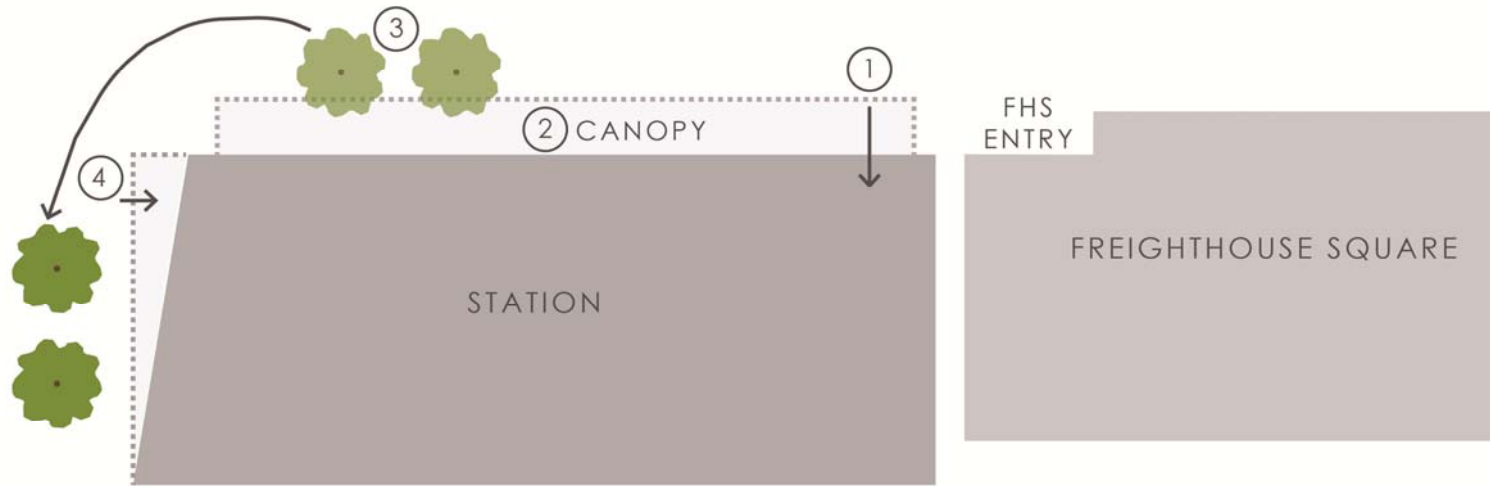


DRAFT

12.09.13



Function| Good Neighbor

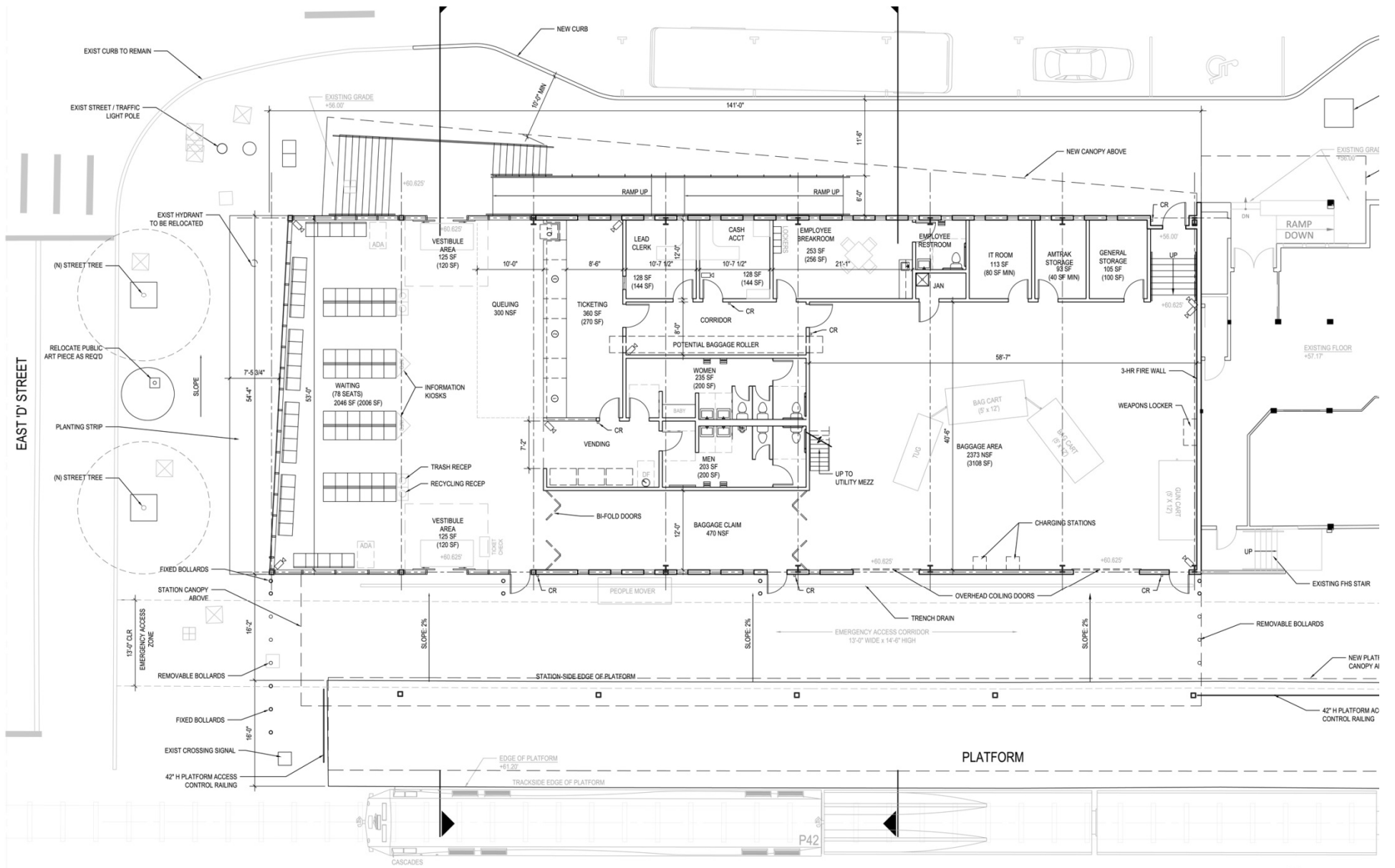


1. Shift the plan south
2. Provide canopy
3. Relocate trees
4. Skew the end to open up entry

DRAFT

12.09.13

VIA



DRAFT
12.09.13



Form | Same Shape



DRAFT

12.09.13

VIA

Form | Express Function



DRAFT
12.09.13

VIA

Form | Guide Users To FHS Entry



DRAFT

12.09.13

VIA

Form | Guide Users to Station



DRAFT
12.09.13

VIA

Form | Louvers to Control Afternoon Sun



DRAFT

12.09.13

VIA

Form | The Engine



DRAFT
12.09.13

VIA



DRAFT

12.09.13

VIA



DRAFT

12.09.13

VIA



DRAFT

12.09.13

VIA



DRAFT

12.09.13

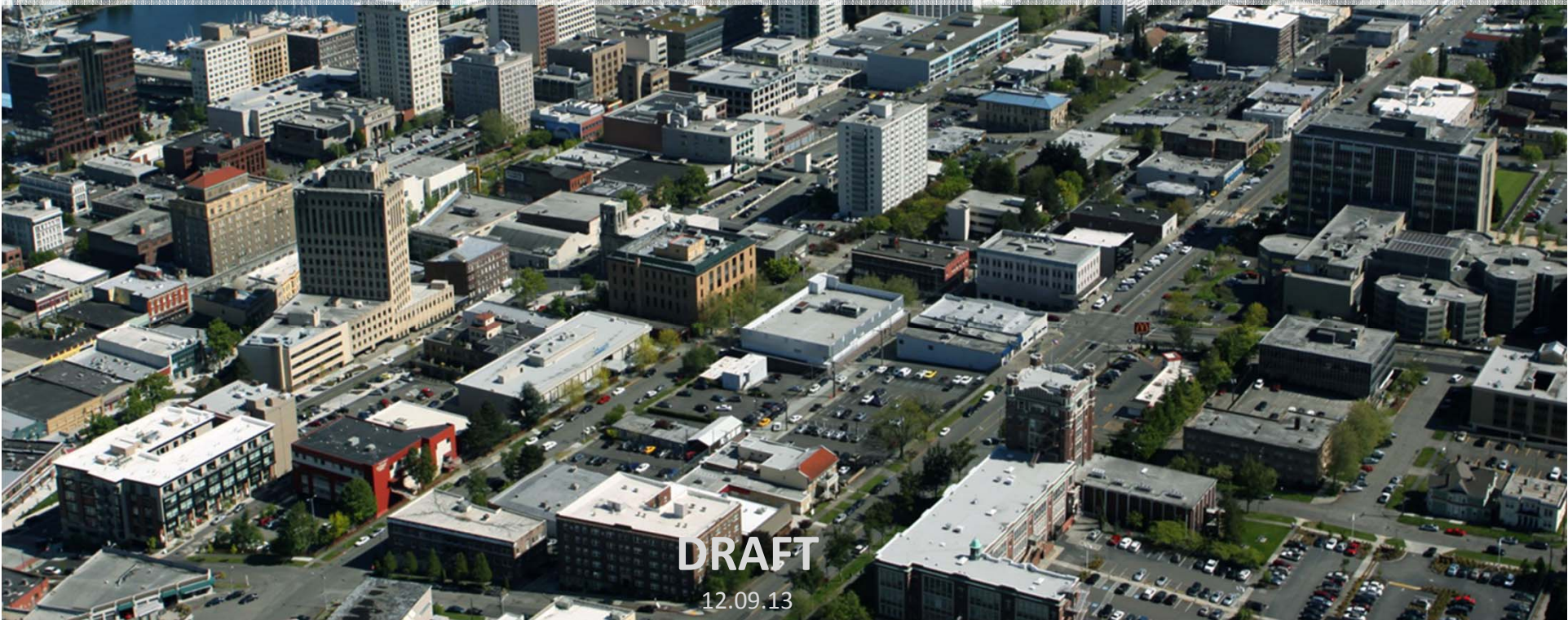
VIA





TACOMA AMTRAK STATION

AT FREIGHTHOUSE SQUARE



DRAFT

12.09.13